



**OSBY PARCA**<sup>TM</sup>  
*pannor för proffs*

Enertech Group

MADE IN SWEDEN 

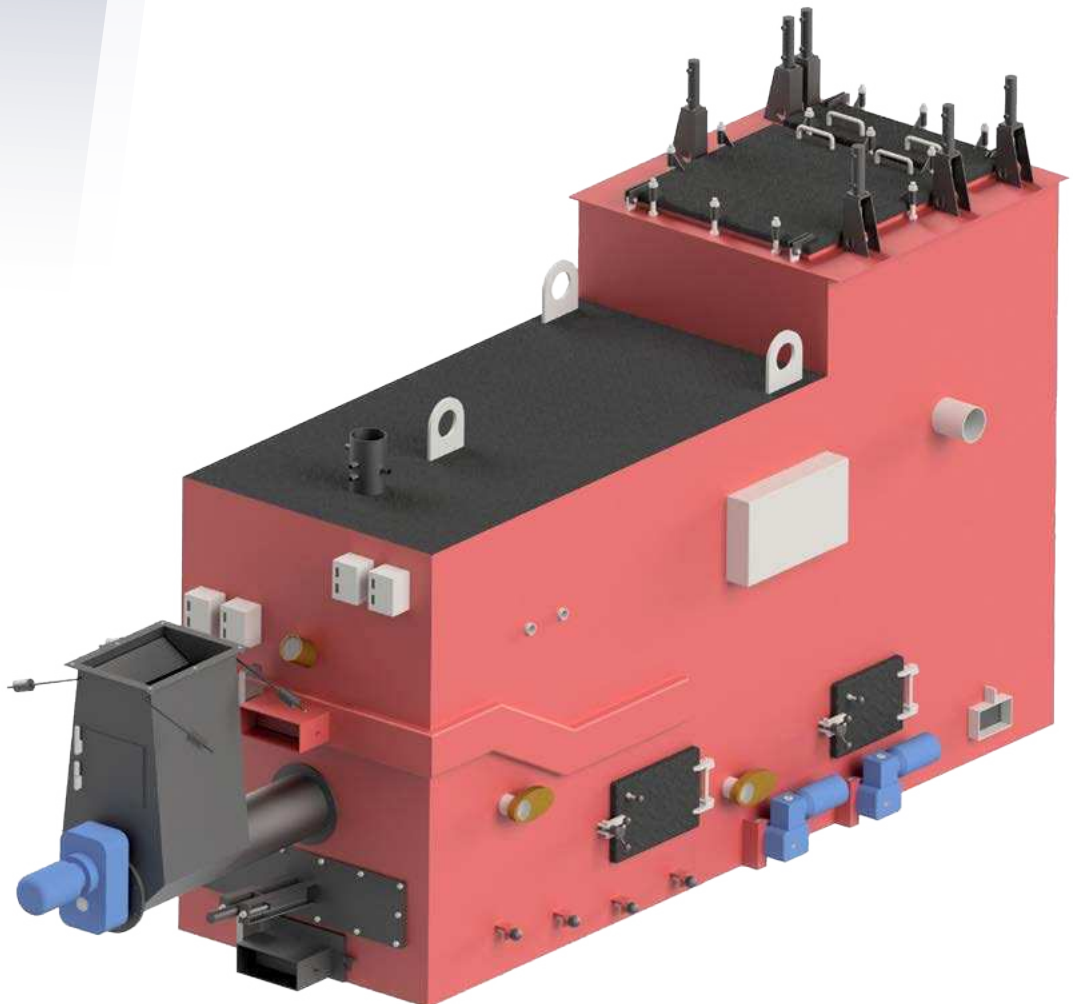
**Osby Parca PB2 L** – Solid fuel boiler 350–995 kW  
– a fully-automatic compact solid fuel boiler with  
integrated combustion equipment

---

# DEPENDABLE BOILER WITH LONG SERVICE LIFE

---

The PB2 genuine solid fuel boiler is the result of many years' experience – our flagship model for dry fuel burning. With its fully-automated system for soot and ash removal, the same high degree of efficiency is always guaranteed, which minimises the operating costs.





The Osby Parca PB2 L is a modern solid fuel boiler with vertical flue gas tubes and low emission levels, **HIGH DEGREE OF EFFICIENCY** and a high **ACCESSIBILITY RATE**.



It comes with **HYDRAULIC AUTOMATIC SOOT REMOVAL** as standard – is kept free from soot and ash without any manual intervention.



The safety system and other settings in the boiler's control system can easily be integrated – **HIGH FLEXIBILITY**, as all parameters can be fine-tuned.



The system is **EASY-TO-USE** thanks to a smart and user-friendly interface.



It has a **COMPACT AND ROBUST DESIGN**, with a unique integrated water-cooled roaster bed.

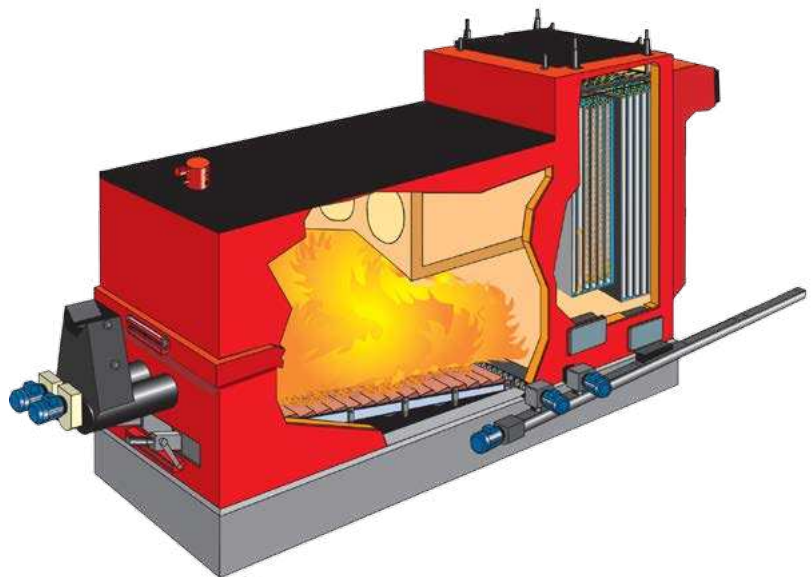


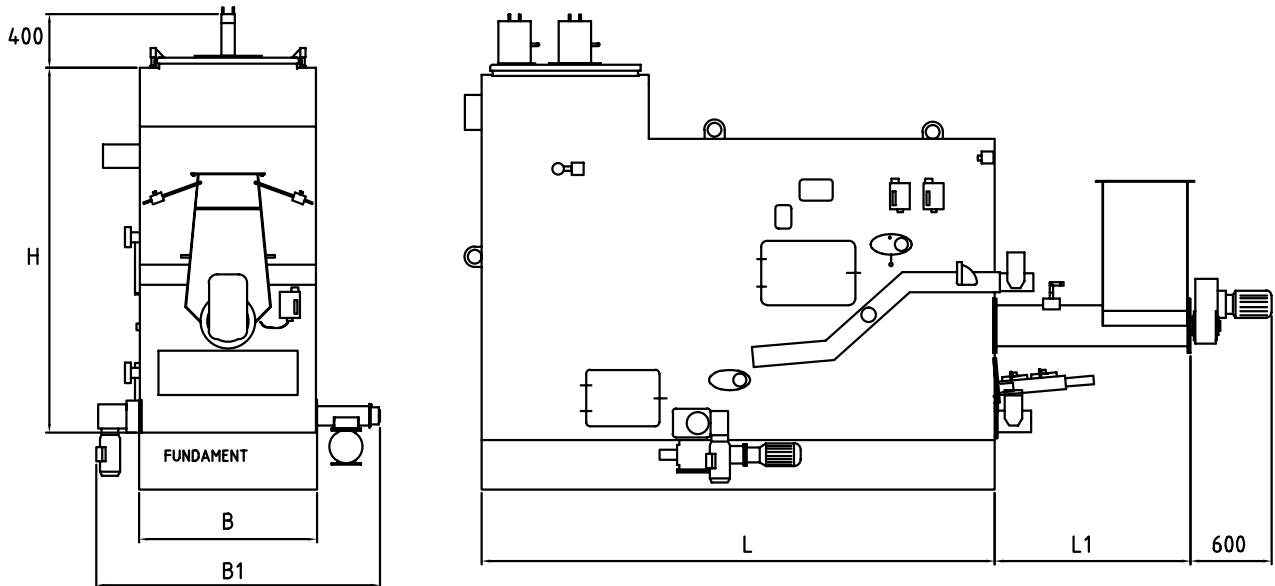
The PB2 represents a **100 % SWEDISH QUALITY PRODUCT** from the town of Osby, with low maintenance costs.



#### DESIGN DATA PB2 L

Effect	350 kW–995 kW
Design Temperature	140°C
Flue Gas Temperature	<160°C
Design Pressure	6.0 bar
Fuel Moisture Content	Max 35%
Boiler Efficiency Level	92%
Return Temperature	min 70°C
Max Operating Temperature	110°C

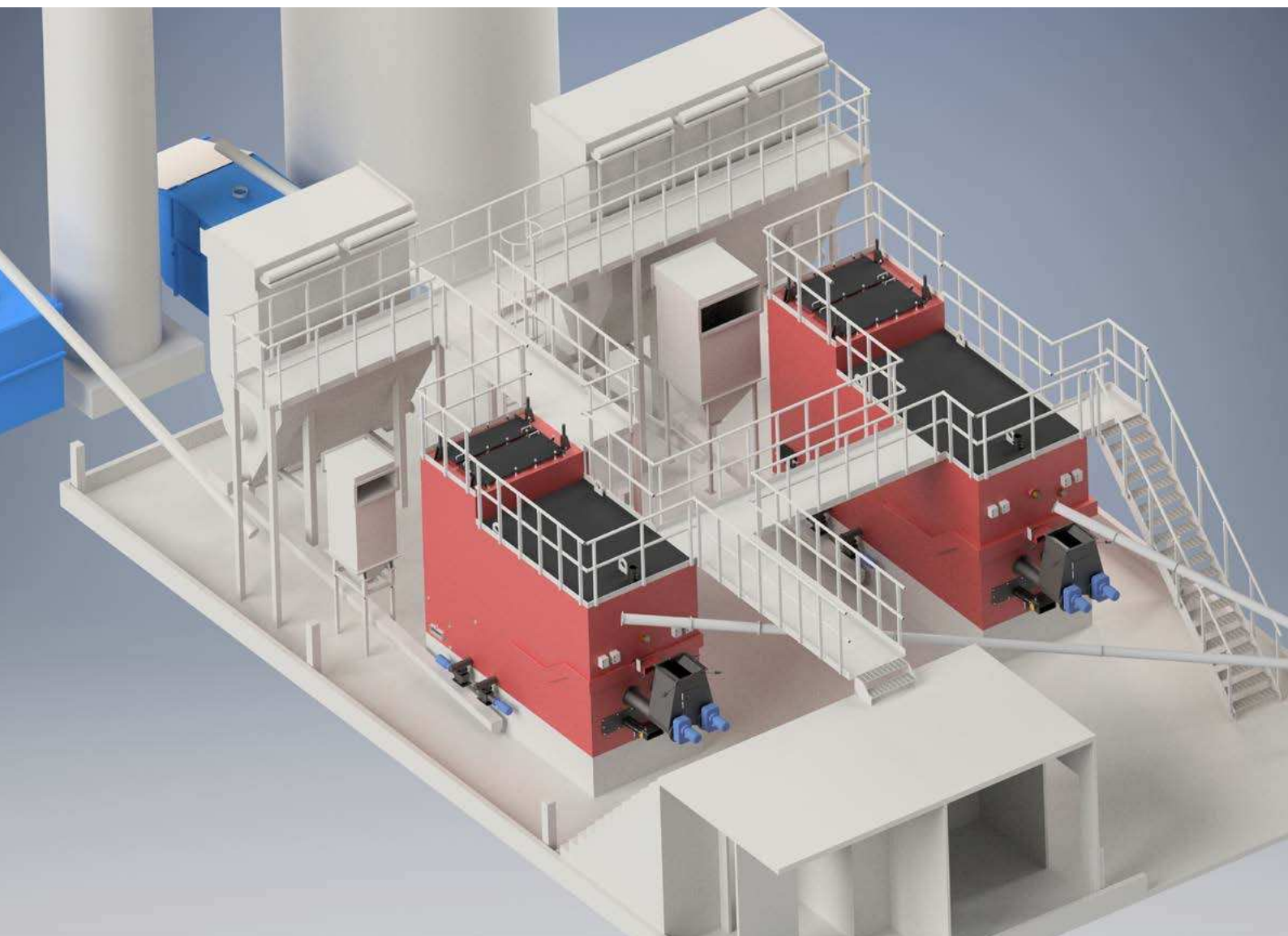




#### DIMENSIONS PB2 L

Rated Output	L	L1	B	B1*	H	Water volume, litres	Weight excl water, kg	Min water flow
350 kW	3060	1150	1050	1730	2300	1500	4000	0.75
500 kW	3530	1150	1050	1730	2300	2100	5500	1.10
750 kW	3750	1150	1220	1900	2450	3100	7600	1.60
995 kW	4012	1150	1390	2070	2450	4200	10500	2.20

\* With internal ash screws for external ash management varies the width.



# Osby Parca PB2 L

## Solid Fuel Boiler 350–995 kW



### A fully-automatic solid fuel boiler

The PB2 is a fully-automatic compact solid fuel boiler intended for burning dry fuels such as pellets, briquettes and wood chips. The boiler's automatic hydraulic soot removal feature means that the same high degree of efficiency can always be guaranteed. With this system the installation does not normally need to be shut down other than during the summer for annual servicing, which reduces the operating costs during the heating season.

A simplified and user-friendly control system is supplied as standard. This standard system manages the boiler's functions. The plant can also be remote-controlled using this control system, as can the customised control system.

Option: In order to further increase the flexibility of the system, there is an option for a customised control system to control the entire plant - for example internal pumps, an oil-fired boiler, distribution pump, valves, etc. Separate quotation applies.

The PB2 is a modern, compact solid fuel boiler with vertical flue gas tubes with low emission levels, a high degree of efficiency and high accessibility.

- High degree of efficiency
- Low maintenance costs
- Low emissions
- Easy-to-operate

Our control system runs on MODbus TCP which certain BMS systems already utilise. If the BMS MODbus TCP system cannot be used, the MODbus TCP to RTU conversion component enables information to be sent to a BMS system that is compatible with MODbus RTU.

BMS = Building energy Management System  
TCP = Several protocols  
RTU = Remote Telemetry Unit

The PB2 light boilers are approved in accordance with 97/23/EC(AFS1999:4) Module D

### The PB2 genuine solid fuel boiler is the result

### of many years' experience – our flagship model for dry fuel burning.

**Automatic soot removal.** The automatic soot removal system keeps the flue gas tubes constantly clean - with a resulting high degree of efficiency!

**Automatic ash management.** All internal ash and dust removal screws are supplied on delivery as well as the flexible control system which ensures that the ash and dust are automatically removed.

**Air supply control.** The air distribution is controlled by two motor-driven dampers; one for primary air and one for secondary air.

**Final combustion.** The boiler's furnace chamber is designed for an efficient final combustion, which implies minimal emissions.

### Functional description – designed for minimal stoppages!

Burning takes place on a horizontal, water-cooled scraper roaster bed which advances the fuel forwards. The fuel bed is kept in motion, which minimises slag accumulation. Any slag that accumulates is automatically fed out together with the ash via the internal ash screw. The boiler's O<sub>2</sub> is regulated with the aid of the control system, whose task it is to adapt the combustion to the actual load, so that the inlet temperature is kept at a constant level. The control system receives a signal from a temperature sensor and subsequently regulates the boiler's output with roaster bed motion, combustion air mass and fuel supply.

The PB2 is designed for minimal stoppages.

- The roaster step is designed as a single unit and can be easily removed with a few bolts
- Complete alert management
- Standard control system with a touchscreen, intuitive user interface with graphics
- Option: Customised control system with graphics

We reserve the right for any typos and updates on the boiler made after June 8 2017.

For use with **WOOD CHIP, PELLETS**  
or **BRIQUETTES** – can cope with up to  
35% fuel moisture content